





## Daylesford Crescent, Cheadle

Guide Price £475,000

🛏 3 🚗 1 🛋 1

- Excellent detached bungalow
- Impressive lounge to fitted breakfast kitchen
- 3 bedrooms
- Off road parking with brick built good sized garage
- Attractive bathroom
- Highly sought after location
- South west facing garden
- Paved garden for ease of maintenance
- Lovely timber built decking in garden perfect for entertaining
- EPC: D

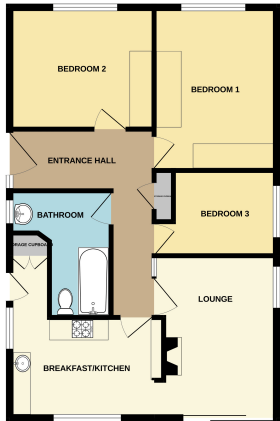


A rare opportunity to acquire a true detached bungalow, situated in Cheadle's premier residential area. The bungalow offers excellent accommodation and in brief features, entrance hall, impressive lounge to fitted breakfast kitchen, 3 bedrooms, and attractive family bathroom. Outside, a paved driveway provides off road parking and access to a good sized brick built garage. The rear garden is paved for ease of maintenance and enjoys a timber decking area and a south westerly aspect. An early is highly recommended to avoid disappointment.





GROUND FLOOR



We warrant that the information contained in this document is true and correct to the best of our knowledge and belief at the time of preparation. We do not warrant that the information contained in this document is complete or that it is suitable for any particular purpose. The information contained in this document is for general information only and should not be relied upon for any specific purpose. We accept no liability for any loss or damage arising from the use of this document. © Andrew Dawson 2022



9 Gatley Road, Cheadle, Cheshire SK8 1LY Tel. 0161 428 1488 Fax. 0161 428 1479  
 Email. [mail@andrewdawson.co.uk](mailto:mail@andrewdawson.co.uk)